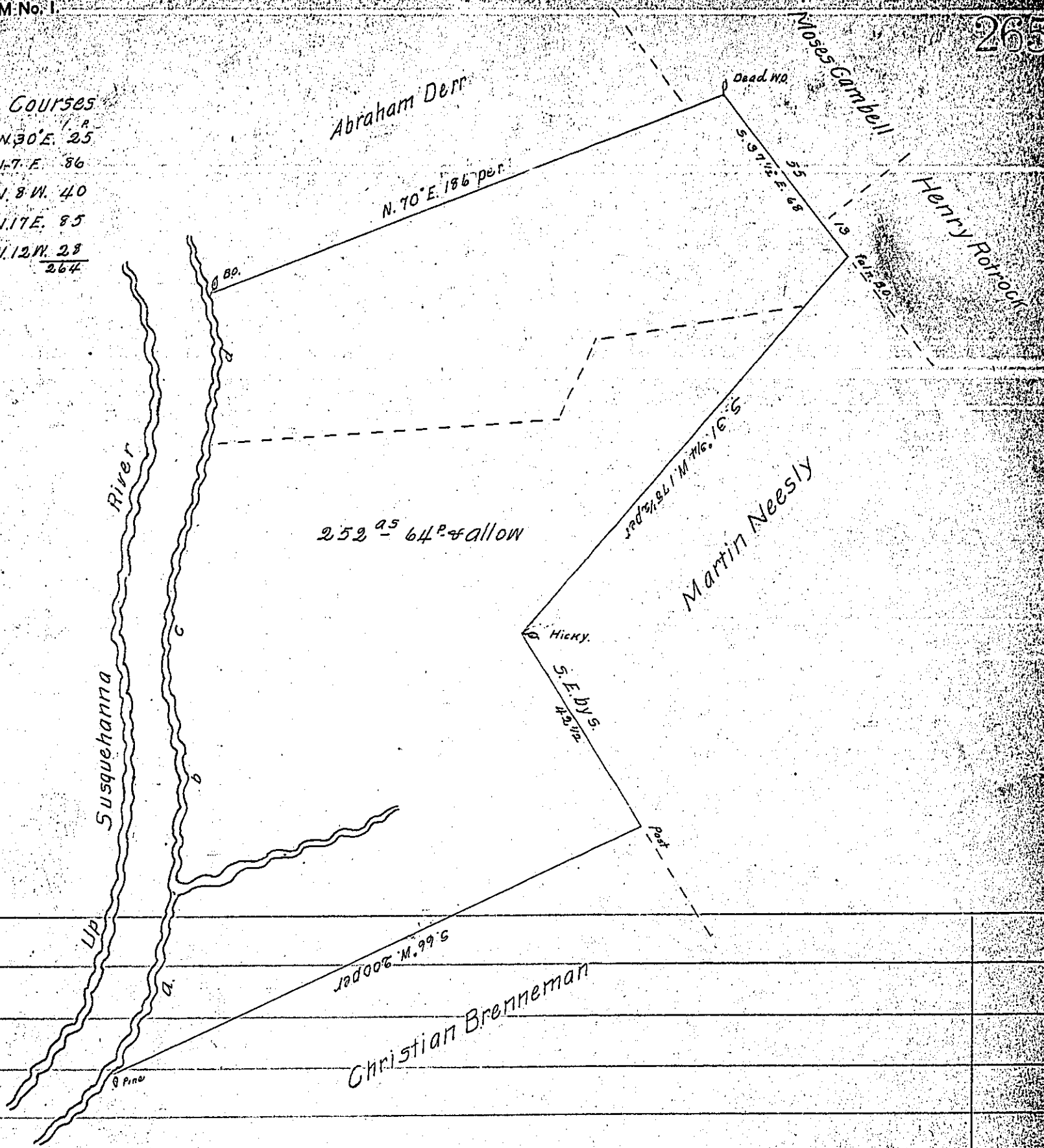


River Courses  
 Pine-a N. 30° E. 25  
 a-b N. 7° E. 86  
 b-c N. 8° W. 40  
 c-d N. 17° E. 85  
 d-B.O. N. 12° W. 28  
 264



By Virtue of a Warrant dated the first day of March 1742 granted to Hugh Boyle Surveyed the 14<sup>th</sup> day of May 1808 (agreeable to the old lines) the above described tract containing two Hundred & fifty two acres Sixty four perches & allow<sup>se</sup> Situate in Derry township Dauphin (late Lancaster) County

Saml Cochran Esqr }  
 Surveyor Genl of Penna } Lewis J. Hollingsworth D.D.

IN TESTIMONY that the above is a copy of the original remaining on file in the Department of Internal Affairs of Pennsylvania, made conformably to an Act of Assembly approved the 16th day of February, 1833, I have hereunto set my Hand and caused the Seal of said Department to be affixed at Harrisburg, this eleventh day of January 1904

*Lewis J. Hollingsworth*  
 Secretary of Internal Affairs